



Aussie Weighbridge Systems Model AWS 106 Surface Weighbridges

Model AWS 106 Design:

National Standards Commission Approved: 6/10B/69

The AWS 106 Weighbridge is a composite design using a combination of universal beams & reinforced concrete. The AWS 106 is quality durable design to the **Latest Australian Standard for Bridges AS/NZS 5100-2004**. The design incorporates heavy mesh & bar in the weighbridge deck & gusset supports long the universal beams; this may give greater strength than some other weighbridges offered in Australia. The AWS 106 weighbridge is normally surface mounted with the load cells at ground level & ramps about 4.5 metres long at each end on a flat level site.

An optional design using Condek reinforcing is available on request, which allows the weighbridge deck to be assembled at the operating height of between 461 & 420mm & is poured in situ; the procedure will generally speed up the installation and may minimize stress to the concrete deck, as minimal lifting in then required to fit the load cells.

Load Cells:

The AWS 106 incorporates Quality HBM C16 30 tonne load cells, which are 100 % stainless steel, hermetically sealed designed to exceed IP68 rating, with integrated top and bottom bearings with dust gaskets to reduce wear. Surge arresters fitted internally to protect against lightening & power surge, for this reason **we offer a two-year warranty & include against the effects of lightening strike.**



PRODUCT INFORMATION

The Quality AWS National Standards Approved Weighbridge Range incorporates only stainless steel, hermetically sealed and lightning protected load cells in our weighbridge kits.

Our approval and designs allow capacities from 10 tonnes through to 200 tonnes. The design also allows for many standard and custom lengths and widths of weighbridge.

Our standard sizes follow:

- 8 x 3 metre, 9 x 3 metre, 10 x 3 metre, 12 x 3 metre, 18 x 3, 3.5 metre, 20 x 3, 3.5 metre, 25/26 x 3, 3.5, 3.6 metre, 33 x 3, 3.5 metre, 40 x 3, 3.5 metre. **Other sizes by specification available under this approval.**



AWS WEIGHBRIDGE MANAGEMENT

COMPREHENSIVE WEIGHBRIDGE MANAGEMENT SOLUTION FOR INDUSTRY

Systems Features

Aussie Weighbridge Systems Weighbridge Management is a Windows Client PC based weighing and information management software system package. It incorporates a multi-window environment, with pull-down and pop-up menus, and data entry fields for database manipulation. The client programs and server database are designed to cater for many different business types and industries. Our systems are used in Council and Private Company landfills and transfer stations, quarrying and mining industry sites, general factory business and warehousing, transport company yards, Standard Public Weighbridges and bulk material industry sites. The range of business is testament to the versatility of the configuration module accessible by the administrator through the user interfaces.

The software architecture is a two (2)-tier client and server environment. The server environment provides a powerful relational database, which is interacted through user-friendly weighbridge management client programs. The client programs can be configured through middleware and may reside on the same computer as the server database, or may reside on other computers on a LAN or WAN.

SCALEABLE INSTALLATION OPTIONS:

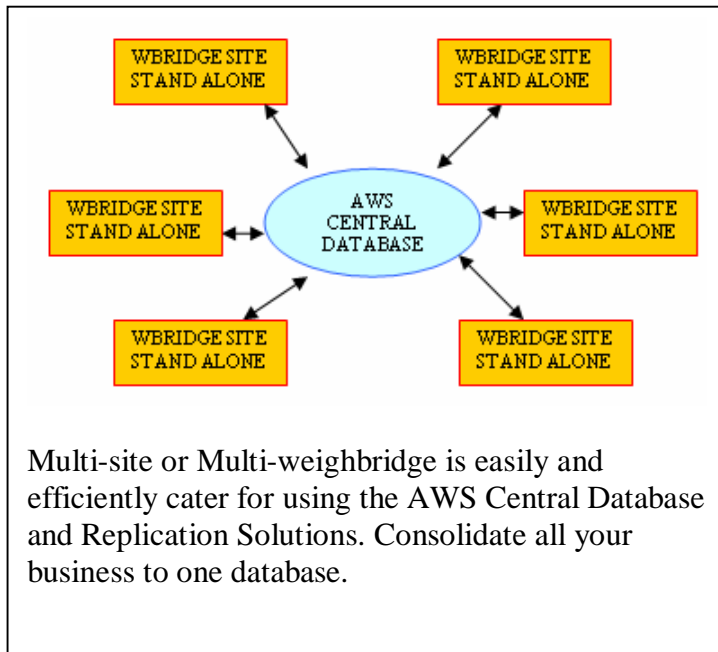
The many options and inclusive AWS client programs that come standard with our quality products makes it possible to setup staff with different management and procedural tasks with a Windows environment to contribute to the management of the weighbridge business and collection and processing of data.



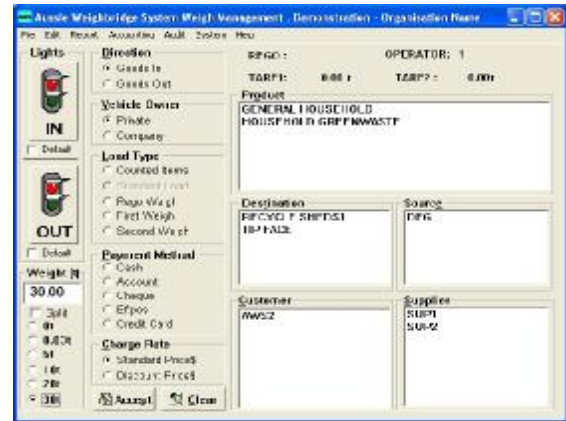
AWS ESCALE Unmanned Windows Terminal



Windows Unmanned Screen - User Friendly



Multi-site or Multi-weighbridge is easily and efficiently cater for using the AWS Central Database and Replication Solutions. Consolidate all your business to one database.



Manned Weighbridge Client PC



Simultaneously, weighbridge operators, managers & drivers can be interacting with the AWS Server database, updating tables, doing accounting running or exporting data & reports, entering transactions manually OR unattended by the vehicle driver.

PRODUCT INFORMATION

Minimum Computer Hardware Standard:

(AWS recommendation ONLY, we advise you receive expert advice from your computer and software suppliers, AWS takes no responsibility for PC hardware and operating systems provided by the customer or the customer's representative).

- Minimum Pentium 4 PC.
- Minimum 256 Megabytes RAM.
- Requires approximately 500 Meg of Hard Disk space for prolonged use, recommend 40Ghd.
- R/W CD drive.
- 17" VGA Monitor.
- Two (2) Spare RS232 Serial Communications Ports.
- 56 K modem or other WAN device.
- Standard Parallel Port for standard reports type printer.
- Server Database Cross Platform, Window or UNIX.

Supported Operating Systems are: Windows 98, 2000, XP. Windows NT 4.0.

Optional Computer Hardware Requirements:

The following extra add on cards and requirements maybe required if you system has interfaces to other devices like Traffic Lights and Boom Gates, External Weighbridge Docket Printer/s, Automatic Identification Readers and connections to Video Recording Systems. Most computers have added on PCI slots to allow the expansion cards.

Serially Connected Options:

- Extra Weighbridge Docket Printer requires a standard RS232 COM port.
- Traffic Control Interface requires a PCI-1762-A I/O Card.
- Video Security System interface requires standard RS232 COM port.
- Dallas Identification Reader requires standard RS232 COM port or USB.

Please contact your AWS Support Team should you have any queries regarding the interfaces necessary for your quality AWS Software System sales@awsscales.com.au

PRODUCT INFORMATION

AWS DRIVER CONTROL 'ESCALE' TERMINAL

GENERAL DESCRIPTION

The ESCALE Driver Control Station is designed for use in rugged industrial environments and/or outdoor unattended operation. A wide range of user options are available, from simple driver initiated ticket to more complex data collection capable of communicating with mainframe computers with seamless data integration. The DCS features a special dust-proof housing to fully enclose the Industrial TFT Panel PC based weighing, recording and printing system.

INDICATOR

An advanced microprocessor based industrial digital indicator/s may fit in the driver station as a standard unit. The indicator digitizes the analogue weight from the load cells and provides the displayed weight and data for the processing printer.

SYSTEM OPERATION

The system can be configured to provide any sequence of operation generated by weight change, PIN / Rego No. Input, vehicle scanner or electronic identification systems like Dallas Technology. Data table links can be made to PIN/REGO numbers so driver input is not required. **As easy as using an ATM.**

Systems Standard Inclusions:

1. QWERTY Data Entry Keyboard, function & enter keys.
2. 15"LCD Flat Screen Display, Touch Screen Upgrade available
3. Dallas Ibutton Identification Reader.
4. Printer, unmanned internally mount, print multiple copies
5. The system supports standard 10/100 LAN connections. The database can be remotely administered, allow replication to central database or seamless data integration to other Third party Software and databases. Fibre Optic & Wireless Ethernet solutions are offered and recommended. Direct VIP support available.
6. Reporting & Export over 80 standard reports in weighbridge management, export wizard to create user-defined spreadsheets, text files.
7. External Device Control: Option to control traffic lights, boom gates, and cash draw interface, serial connection to video systems.
8. Set Points Batch & level control options available.
9. Drivers remote displays available from 40 mm – 150 mm for complete transparency 7 to meet unmanned requirements.
10. Lockable powder coat purpose built enclosure.
11. Mounting options include at drivers window for ease of use & safety.
12. Onboard UPS with interfaced with Windows OS.
13. Optically isolated lightening protected I/O's.

PRODUCT INFORMATION

ESCALE Solution Overview:

The ESCALE Terminal has labour saving benefits as well as automating procedures on and around weighbridges. The systems by design will minimize human input and therefore this may reduce human error factors. The systems are designed to work in conjunction with the **AWS Weighbridge Windows Management Server Database & Range of AWS Client Programs**. These standard AWS IT products will provide a site or business wide solution from the weighbridge/s and points of sale in the operation. Back office tasks like raising orders and jobs, allocating deliveries to transport, and generating customer invoicing, while quite professionally handling point of sale tasks and cash business payments. We even offer CBA approved Integrated **EFTPOS Software** as an option.

Amongst the many benefits we highlight the following as TOTAL COST of OWNERSHIP (TCO) advantages for the clever business owner, Manager or CEO.

- Multi-task your staff, vehicles can now transact completely unattended if necessary.
- Administration / back office staff can maintain database, run reports, and generate invoices, from their desktop.
- Maintain controlled access to your site for delivery vehicles and visitors, by logging them in & out through AWS.
- The systems are particularly attractive to multi-site / multi-weighbridge business. Our **Powerful Central Database** solution can be supplied to consolidate all of your transactional weighbridge business to a server anywhere a phone line can be installed.
- Both your Managers & IT Personnel will appreciate the time available once The AWS solution is reliably collecting and maintaining important data for the business.

PRODUCT INFORMATION

1. The Administrator can allocate Operator Permissions and individual logons.
 2. At Logon, Cash Reconciliation option to balance cash floats.
 3. Debtors accounting with invoices, statements, credits and adjustments.
 4. The ability to reconcile debtor's payments.
 5. Cash & Account GL Batches can be generated and transferred to third party General Ledger programs.
 6. Invoices can be raised from job numbers created on the system.
 7. Accounting table records can be exported to file locations in three-supported common file formats.
 8. Separate debtors accounting reports, trial balance, unpaid invoices etc.
 9. In process credit control **ALERTS**, customer account warnings.
 10. Account status warning messaging may be printed to transaction dockets if allowed to continue.
 11. Personalised debtors accounting stationary by importing company logos, changing stationary footer messaging, user entered messaging automatically printed on ageing customer accounts.
 12. The system provides accounting and transaction stationary. Also allows Microsoft WORD templates to be created and recalled.
 13. CBA Com2000 Eftpos terminal Interface and control from the client programs manned and unmanned automatic operation.
 14. The ability to reprint a weighbridge dockets.
 15. Email reports and exports directly from the client programs.
 16. Configuration module to set and change connected peripheral devices from the client program interface.
 17. Export Wizard, select fields and export your transactions information in dbase and text file formats to the file location of choice. The ability to save the fields structure use for regular exports.
 18. Tables are provided to store information on Products both weighed and counted if necessary, Customers, Suppliers, Destinations, Source, and Vehicle Types for unweighed Standard Loads, Company Fleet Trucks, Customer Trucks, Suppliers / Contractors Trucks, Trailers, Drivers, Job Numbers, **Stock Control**.
 19. Input counted and weighed product pricing with price structure options, including cost for cost/sell analysis.
 20. Schedule price increases either globally or by product to activate on a certain date.
 21. The ability to edit a previously created transaction to adjust mistakes, changes logged in **AUDIT** tables.
 22. The ability to create **Manual Transactions** if necessary. Manual transactions may be entered from other locations with site-specific docket numbers entered by the user.
 23. The ability to multi product manual dockets or input dockets through the docket entry module.
 24. The reporting in the system is very powerful and will allow the operator to filter as little or as much data from the report as required.
 25. There are also GST reports and all necessary reporting to prepare EPA returns.
 26. Reports can be exported from the report generation window as PDF's and emailed off your desktop.
 27. If you have more than one site there is also a very useful Configuration Module, which allows each site to set-up the software to work with the logistics of the site and style of reporting, and weighbridge docket data required.
 28. The software will interface with and support a cash draw.
 29. Interfaces to electronic ID systems like proximity cards, Dallas ID Buttons and other identification systems supported.
 30. Transaction data can be transmitted to video systems for storage with video images, this makes site auditing very fast and accurate.
 31. Traffic Lights & Boom Gates can be interfaced and controlled by both manned and unmanned client programs.
 32. Barcode Reader options available to automate some transaction procedures.
1. Stock Control module allowing accurate quantities on hand directly from net weight of products added and deducted over the weighbridge. Stock take variances can be input to the stock control tables through the client programs.
 2. Cartage charges and costs can be entered against contract carters and also against job numbers.
 3. Orders can be entered directly into the system against job numbers, details and job specific pricing can be input into the job records. Job order quantities can be entered into job records and as delivery or sales occur, the quantity supplied or received comes off job targets.
 4. Record offending and prohibited vehicles, the programs monitor for prohibited vehicles and prevent transactions on barred vehicles.
 5. Control deletion of transaction dockets, actions written to audit table, including operator ID, time, date.
 6. Audit tables for most editor functions on the database. Restricted access to these tables can be available by logon. The program also monitors for weighbridge weight increases that do not result in a transaction. This setting can be adjusted to suit the requirements of a site, and makes it difficult for weighbridge staff to give away business should this be a concern.
 7. Trucks may have stored tares, and validity can be set on the tare value to allow random tare requirements. The software automatically provides this procedure.
 8. Duty of Care requirements are considered with vehicle's gross vehicle mass recorded in truck tables to monitor overloaded vehicles leaving the site.
 9. RTA Rego Weigh Tickets can be processed in one pass over the weighbridge; charge table for these transactions can be set-up.
 10. Full Registered Public Weighbridge Client Available price on application.

Some of the more notable newer features in Ver3.7B:

1. Replication Schema Interfaces to allow automatic replication of site data direct to Central Database Office Suite. Excellent solution for Multi-Site or Multi-Task site with separate stand alone databases. This solution consolidates all data seamlessly.
2. Job Number / Contract Number Table Expansion to include, more price & cartage price options.
3. Expansion of Suppliers Accounting features & reports, the program is a step closer to providing double entry accounting.
4. Improvements & expansion of the **Manual Point of Sale Docketing Module** for sites that may not have a weighbridge as yet? Supports barcode functions just like going to the supermarket or hardware store.
5. Development of full **USER** configurable I/O control with interface card to support more external devices and inputs from field transducers etc.
6. ESCALE unmanned client has increasingly more function, this system stands alone and can adequately process traffic without any human input, Fast, reliable, stable!
7. Option of adding full reverses cycle air conditioning to ESCALE Terminal enclosures to deal with the hot / cool environments.

New functions are being added to this quality program all the time as we react to our customer's feedback for even better, smarter, time saving systems. The features listed on this page are the more notable and sort after features, your standard AWS program comes with a lot more innovation than you may expect!!

PRODUCT INFORMATION

AWS Customer Testimonials

"We find Aussie Weighbridge Systems software simple to use. New staff pick it up in a very short time. Features are easy to use and the reporting system couldn't be easier. The staff at AWS will bend over backwards to help customers in the unlikely event of a problem and are constantly doing R&D to upgrade the system. We would recommend the system to other Councils & Private businesses looking for this sort of product."

**Steve Gribbin Technical Officer Waste Services,
Tamworth Regional Council**

"We have the AWS system installed at three sand quarry sites operating as an unattended docketing system linked to our existing sales system. The software is proving reliable and easy to use and the after sales support has been excellent."

Greg Howell Rocla Quarry Products Perth

"We have been running AWS software for several years now and have found it to be extremely reliable and easy to use. The service and support provided by the AWS team has been fantastic and it has been a pleasure to deal with them!"

Katherine Frost, Griffith City Council.

"AWS after sales support is outstanding. Staff very polite and helpful and will be with you till your problem is solved".

**Vincent Namekit Technical Manager
Hargy Oil Palms Ltd West New Britain Province Papua New Guinea**

"PGH installed 5 AWS ESCALE Weighbridge Terminals, running AWS Weighbridge Management Database and Client Software within our NSW Brick & Paver division. We are and have been more than happy with the products, service shown to us, both during and after installation".

**Sam Tarabori NSW Raw Materials Manager
CSR PGH Brick & Paver Division**

"The AWS system fulfills a number of functions required by different aspects of the business and accommodates a large number of users."

**Terry Hogan Grains Manager
Uncle Tobys / Goodman Fielder WAHGUNYAH VIC**

"We found AWS helpful and professional at all stages of installing our new weighbridge, as well as providing good support over the past 12 months."

Vanessa Toparis, Goulburn City Council

Your Local Distributor:



Unit 9 /160 Hartley Road,
Smeaton Grange NSW 2567
Ph: 1300 366 131 Fax: 02 4454 4099

Email: sales@awsscales.com.au

BRANCHS: SYDNEY – ACT

PRODUCT INFORMATION

STANDARD TERMS & CONDITIONS

CUSTOMER RESPONSIBILITY: (these items are considered customer supply unless included specifically in the attached proposal or otherwise specified as part of the tender or contract).

- Clean 240 V Power Supply to all electronic / electrical equipment.
- Excavation, civil foundation works and deck steel kit assembly and deck pour if not quoted by AWS.
- Water & power within 25 metres of weighbridge.
- OH&S requirements for weighbridges & weighbridge sites, catwalks, signage.
- Weighbridge Location, preparation and excavation of slab and beam sections if not detailed in AWS quotation.
- Geo-tech survey of bearings strength if required.
- Council approval.
- Dead load for full test certification, i.e.: loaded truck or tanker.
- Forklift, crane or loader to delivery vehicles & place weighbridge beam kit.
- Access for standard concrete trucks, non allowance for concrete pumps included this proposal.
- Excavation and removal of rock and old services.
- Unless specified waste will be deposited at site.
- PC & reports printer for office location to specification or industry standards.
- LAN & WAN supply, setup and configuration.
- Network administrator available for installation & commissioning of systems.
- Server and server operating systems as required.
- Completion of Software specification questionnaire.

PRICES:

- Prices are exclusive of GST.
- AWS (Aussie Weighbridge Systems) Pty Ltd Standard Terms and Conditions as attached apply.
- Quotation Valid 60 Days, and may subject to increases in steel and building materials.
- Test truck & operator pricing is based on the unit being available in your region, unless specific visit requested and quoted.

TERMS OF PAYMENT:

- 30% deposit, payments of progress claims paid within 7 days.

DELIVERY DATE:

- Weighbridge Kit approximately three (3) working weeks from receipt of order, signing our project contract, payment of deposit invoice and clearance of technical details.
- Software can be delivered and installed approximately four (4) working weeks from receipt of order, signing our project contract, payment of deposit invoice and clearance of technical details.
- Civil Construction approximately three (3) working weeks from receipt of order, signing our project contract, payment of deposit invoice and clearance of technical details.

WARRANTY:

- Refer attached AWS (Aussie Weighbridge Systems) Pty Ltd Terms and Conditions.
- The equipment and services offered in this proposal are covered against manufacturing defects or faulty workmanship for a period of twelve (12) months from installation.
- Weighbridge load cells have a two (2) year warranty period including damage by lightning strike. Digital indicators have a two (2) year back to base manufacturers warranty; lightening and surge damage is not included.

SERVICE:

- Installation and on going service supplied from our Sydney, ACT Offices or may be from one of our regional agents, with Help Desk Software Support from Sydney IT Technicians.