

AWS WEIGHBRIDGE MANAGEMENT

COMPREHENSIVE WEIGHBRIDGE MANAGEMENT
SOLUTION FOR INDUSTRY



www.awsscales.com.au
sales@awsscales.com.au

FACIMILE: 1300 366 131
PHONE: 61 02 4454 4099

SCALEABLE INSTALLATION OPTIONS:

The many options and inclusive AWS client programs that come standard with our quality products makes it possible to setup staff with different management and procedural tasks with a Windows environment to contribute to the management of the weighbridge business and collection and processing of data.



AWS ESCALE Unmanned Windows Terminal



Windows Unmanned Screen - User Friendly

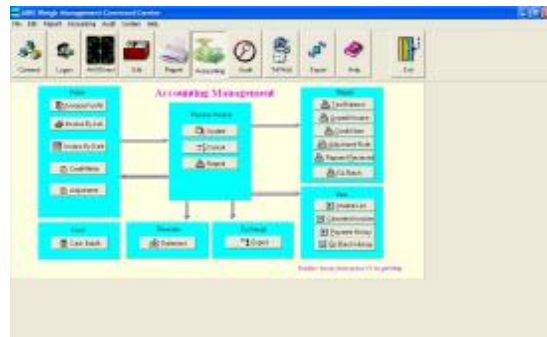


Manned Weighbridge Client PC



Standard Windows Networking on WAN & LANs

Simultaneously, hundreds of users can be interacting with the AWS Server database, updating tables, doing accounting running or exporting data & reports, entering transactions manually OR unattended by the vehicle driver.



Systems Features

Aussie Weighbridge Systems Weighbridge Management is a Windows PC based weighing and information management software system package. It incorporates a multi-window environment, with pull-down and pop-up menus, and data entry fields for database manipulation. The client programs and server database are designed to cater for many different business types and industries. Our systems are used in Council and Private Company landfills and transfer stations, quarrying and mining industry sites, general factory business and warehousing, transport company yards, Standard Public Weighbridges and bulk material industry sites. The range of business is testament to the versatility of the configuration module accessible by the administrator through the user interfaces.

The software architecture is a two (2)-tier client and server environment. The server environment provides a powerful relational database, which is interacted through user-friendly weighbridge management client programs. The client programs can be configured through middleware and may reside on the same computer as the server database, or may reside on other computers on a LAN or WAN. The weighbridge and unmanned weighbridge client may be directly connected to the weighbridge/s digital indicator and other controlled peripheral devices. Version 3.6 onwards can be configured through the setup.ini file to change the Client environment from the standard manned weighbridge client environment, unmanned automatic weighing terminal client and also to the Back Office Administration Environment, and as per recent development the Unmanned Driver Control Station Terminal Client. This new feature allows more options for the software owner to better utilize the licensing purchased with the system. It also means that all environments reside in the same program group and file structure to allow ease of backup.

It is possible to connect many simultaneous users to the server database without loss of program speed and functionality. Enquire with your AWS Sales Representative to the scaleable client and server options and the many peripheral hardware options available.

The following are amongst a list of standard features:

1. The Administrator can allocate Operator Permissions and individual logons.
 2. At Logon, Cash Reconciliation option to balance cash floats.
 3. Debtors accounting with invoices, statements, credits and adjustments.
 4. The ability to reconcile debtor's payments.
 5. Cash & Account GL Batches can be generated and transferred to third party General Ledger programs.
 6. Invoices can be raised from job numbers created on the system.
 7. Accounting table records can be exported to file locations in three-supported common file formats.
 8. Separate debtors accounting reports, trial balance, unpaid invoices etc.
 9. In process credit control **ALERTS**, customer account warnings.
 10. Account status warning messaging may be printed to transaction dockets if allowed to continue.
 11. Personalised debtors accounting stationary by importing company logos, changing stationary footer messaging, user entered messaging automatically printed on ageing customer accounts.
 12. The system provides accounting and transaction stationary. Also allows Microsoft WORD templates to be created and recalled.
 13. CBA Com2000 Eftpos terminal Interface and control from the client programs manned and unmanned automatic operation.
 14. The ability to reprint a weighbridge dockets.
 15. Email reports and exports directly from the client programs.
 16. Configuration module to set and change connected peripheral devices from the client program interface.
 17. Export Wizard, select fields and export your transactions information in dbase and text file formats to the file location of choice. The ability to save the fields structure use for regular exports.
 18. Tables are provided to store information on Products both weighed and counted if necessary, Customers, Suppliers, Destinations, Source, and Vehicle Types for unweighed Standard Loads, Company Fleet Trucks, Customer Trucks, Suppliers / Contractors Trucks, Trailers, Drivers, Job Numbers, **Stock Control**.
 19. Input counted and weighed product pricing with price structure options, including cost for cost/sell analysis.
 20. Schedule price increases either globally or by product to activate on a certain date.
 21. The ability to edit a previously created transaction to adjust mistakes, changes logged in **AUDIT** tables.
 22. The ability to create **Manual Transactions** if necessary. Manual transactions may be entered from other locations with site-specific docket numbers entered by the user.
 23. The ability to multi product manual dockets or input dockets through the docket entry module.
 24. The reporting in the system is very powerful and will allow the operator to filter as little or as much data from the report as required.
 25. There are also GST reports and all necessary reporting to prepare EPA returns.
 26. Reports can be exported from the report generation window as PDF's and emailed off your desktop.
 27. If you have more than one site there is also a very useful Configuration Module, which allows each site to set-up the software to work with the logistics of the site and style of reporting, and weighbridge docket data required.
 28. The software will interface with and support a cash draw.
 29. Interfaces to electronic ID systems like proximity cards, Dallas ID Buttons and other identification systems supported.
 30. Transaction data can be transmitted to video systems for storage with video images, this makes site auditing very fast and accurate.
 31. Traffic Lights & Boom Gates can be interfaced and controlled by both manned and unmanned client programs.
 32. Barcode Reader options available to automate some transaction procedures.
1. Stock Control module allowing accurate quantities on hand directly from net weight of products added and deducted over the weighbridge. Stock take variances can be input to the stock control tables through the client programs.
 2. Cartage charges and costs can be entered against contract carters and also against job numbers.
 3. Orders can be entered directly into the system against job numbers, details and job specific pricing can be input into the job records. Job order quantities can be entered into job records and as delivery or sales occur, the quantity supplied or received comes off job targets.
 4. Record offending and prohibited vehicles, the programs monitor for prohibited vehicles and prevent transactions on barred vehicles.
 5. Control deletion of transaction dockets, actions written to audit table, including operator ID, time, date.
 6. Audit tables for most editor functions on the database. Restricted access to these tables can be available by logon. The program also monitors for weighbridge weight increases that do not result in a transaction. This setting can be adjusted to suit the requirements of a site, and makes it difficult for weighbridge staff to give away business should this be a concern.
 7. Trucks may have stored tares, and validity can be set on the tare value to allow random tare requirements. The software automatically provides this procedure.
 8. Duty of Care requirements are considered with vehicle's gross vehicle mass recorded in truck tables to monitor overloaded vehicles leaving the site.
 9. RTA Rego Weigh Tickets can be processed in one pass over the weighbridge; charge table for these transactions can be set-up.
 10. Full Registered Public Weighbridge Client Available price on application.

Some of the more notable newer features in Ver3.7B:

1. Replication Schema Interfaces to allow automatic replication of site data direct to Central Database Office Suite. Excellent solution for Multi-Site or Multi-Task site with separate stand alone databases. This solution consolidates all data seamlessly.
2. Job Number / Contract Number Table Expansion to include, more price & cartage price options.
3. Expansion of Suppliers Accounting features & reports, the program is a step closer to providing double entry accounting.
4. Improvements & expansion of the **Manual Point of Sale Docketing Module** for sites that may not have a weighbridge as yet? Supports barcode functions just like going to the supermarket or hardware store.
5. Development of full **USER** configurable I/O control with interface card to support more external devices and inputs from field transducers etc.
6. ESCALE unmanned client has increasingly more function, this system stands alone and can adequately process traffic without any human input, Fast, reliable, stable!
7. Option of adding full reverses cycle air conditioning to ESCALE Terminal enclosures to deal with the hot / cool environments.

New functions are being added to this quality program all the time as we react to our customer's feedback for even better, smarter, time saving systems. The features listed on this page are the more notable and sort after features, your standard AWS program comes with a lot more innovation than you may expect!!

AWS Customer Testimonials

"We find Aussie Weighbridge Systems software simple to use. New staff pick it up in a very short time. Features are easy to use and the reporting system couldn't be easier. The staff at AWS will bend over backwards to help customers in the unlikely event of a problem and are constantly doing R&D to upgrade the system. We would recommend the system to other Councils & Private businesses looking for this sort of product."

**Steve Gribbin Technical Officer Waste Services,
Tamworth Regional Council**

"We have the AWS system installed at three sand quarry sites operating as an unattended docketing system linked to our existing sales system. The software is proving reliable and easy to use and the after sales support has been excellent."

Greg Howell Rocla Quarry Products Perth

"We have been running AWS software for several years now and have found it to be extremely reliable and easy to use. The service and support provided by the AWS team has been fantastic and it has been a pleasure to deal with them!"

Katherine Frost, Griffith City Council.

"AWS after sales support is outstanding. Staff very polite and helpful and will be with you till your problem is solved".

**Vincent Namekit Technical Manager
Hargy Oil Palms Ltd West New Britain Province Papua New Guinea**

"PGH installed 5 AWS ESCALE Weighbridge Terminals, running AWS Weighbridge Management Database and Client Software within our NSW Brick & Paver division. We are and have been more than happy with the products, service shown to us, both during and after installation".

**Sam Tarabori NSW Raw Materials Manager
CSR PGH Brick & Paver Division**

"The AWS system fulfills a number of functions required by different aspects of the business and accommodates a large number of users."

**Terry Hogan Grains Manager
Uncle Tobys / Goodman Fielder WAHGUNYAH VIC**

"We found AWS helpful and professional at all stages of installing our new weighbridge, as well as providing good support over the past 12 months."

Vanessa Toparis, Goulburn City Council

The included list of standard features, are requirements of a quality weighbridge transaction and reporting systems. There are more standard functions and with the ease of use for operators and truck drivers alike makes the product a leader in the weighing industry. Our in-house development team work with new and existing customers to make the product suit many industries and changes to cater for industry needs. As a licensed weighing company AWS also works closely National Standards Commission and The Department of Fair Trading publications and codes of practice to insure the system comply with government requirements and acts of parliament. Our sales team will also advise and provide pricing for correct weighbridge signage, peripheral displays and weighbridge infrastructure to insure you get the optimum results and throughput for your site.

Typical Weighbridge & Software Options

On the following page a schematic of a typical weighbridge site that Aussie Weighbridge Systems have and can design, construct and commission including all site video and building security, all office computer hardware and peripherals. A brief overview and operational specification follows.

Weighbridges:

AWS Model 106 or 108 Inbound & Outbound weighbridges constructed and certified all by AWS. This design allows for fast throughput on a busy site, further improved if room allows by the inclusion of an Exit Lane. Weighbridge office or small operators accommodation is located between the weighbridges to allow good vision of all operational areas, with unobstructed views required to each end of each weighbridge.

AWS Weighbridge Management System:

The site software system would provide one site server database with two (2) ESCALE Unmanned DCS Terminals one (1) for each weighbridge running the unmanned terminal client program, one (1) or to (2) weighbridge client programs on workstation PC's. The server database may be running on any of the network-connected computers. The system allows for the vehicles to transact unmanned and receive a transaction docket at the ESCALE, or depending on the selection access allocated to the truck record therefore the driver if in process transactions selection are necessary the driver can start the transaction and the weighbridge operator at the manned terminal can complete the docket and send the print job to the particular ESCALE terminal.

[Desktop Computer Requirements for AWS Weighbridge Management Software System/s](#)

Computer Hardware Standard:

- Minimum Pentium 4 PC.
- Minimum 256 Megabytes RAM.
- Requires approximately 500 Meg of Hard Disk space for prolonged use, recommend 40Ghd.
- R/W CD drive.
- 17" VGA Monitor.
- Two (2) Spare RS232 Serial Communications Ports. (Weighbridge Indicator & Docket Printer).
- Standard Parallel Port for standard reports type printer.
- Server Database Cross Platform, Window or Unix.

Supported Operating Systems are: Windows 95, 98, 2000, XP. Windows NT 4.0.

Optional Computer Hardware Requirements:

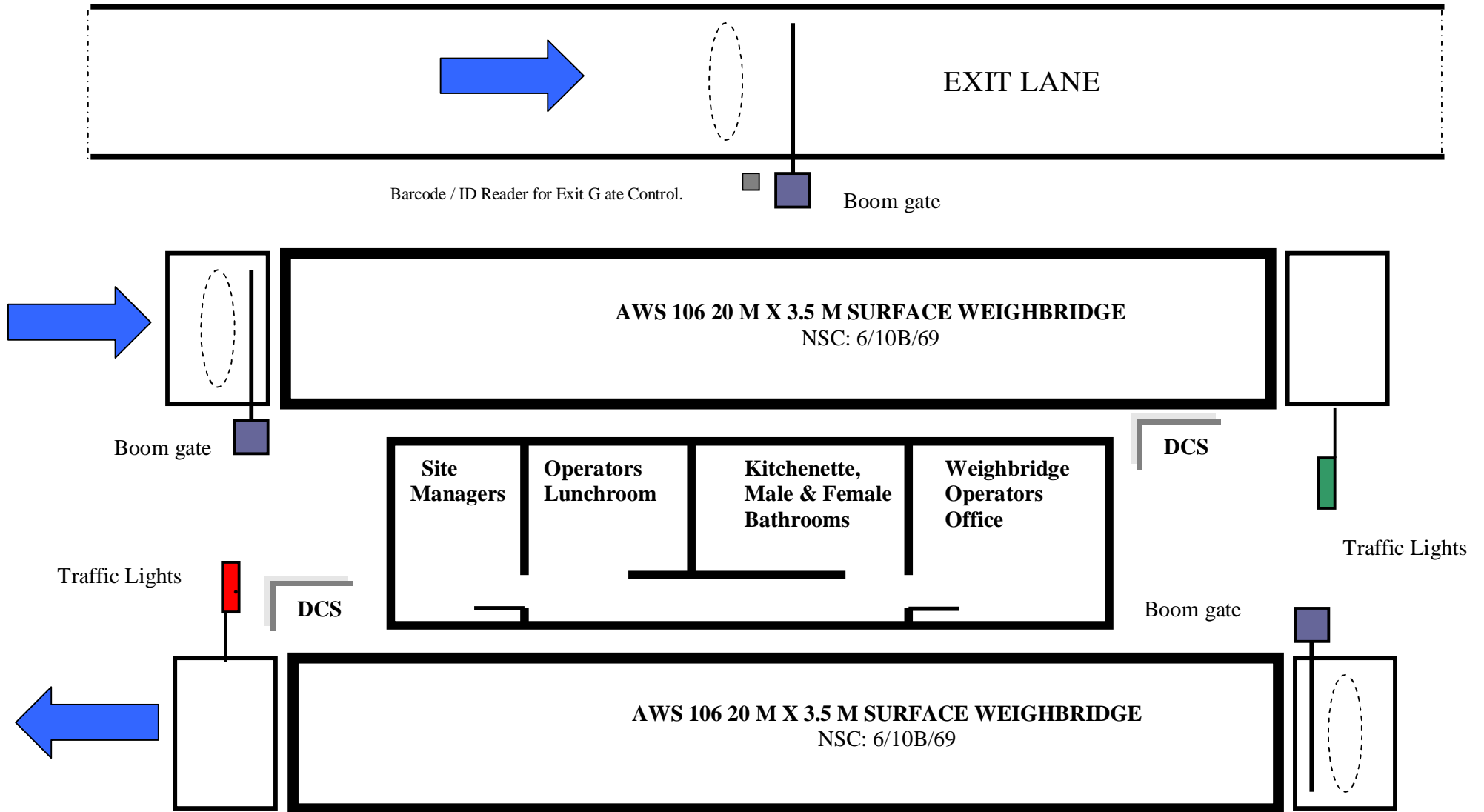
The following extra add on cards and requirements maybe required if you system has interfaces to other devices like Traffic Lights and Boom Gates, External Weighbridge Docket Printer/s, Automatic Identification Readers and connections to Video Recording Systems. Most computers have added on PCI slots to allow the expansion cards.

Serially Connected Options:

- Extra Weighbridge Docket Printer requires a standard RS232 COM port.
- Traffic Control Interface requires a standard parallel port.
- Chubb Video Security System interface requires standard RS232 COM port.
- Dallas Identification Reader requires standard RS232 COM port.

Please contact your AWS Support Team should you have any queries regarding the interfaces necessary for your quality AWS Software System sales@awsscales.com.au

TYPICAL WEIGHBRIDGE SITE LAYOUT INBOUND / OUTBOUND



Additional Information:

The Server Database Software we use and recommend for our systems is Borland Interbase 6.5. Borland Interbase 6.5 is a SQL relational database system, platform independent. The architecture is two- (2) tier, client and server design, with Interbase 6.5 as the server, and the client application developed in the latest Delphi Enterprise Tools. The system can be installed on dedicated PC's, installed on a multi-weighbridge site with or without a dedicated server on a LAN, and also we have sites using a WAN to connect users to site to allow administration and edits of the site based server database. We currently have in development our scaleable back office client that will introduce our users to the concept of a Central Server database that will replicate the data to the site database on pre determined user frequency. The database product on a Windows platform will provide adequate access for up to 100's simultaneous database users, on a Unix Platform this number may exceed 500 users.

Data integrity is insured by use of relational database mechanisms such as Primary Key, Foreign Key, and data constraint mechanisms. Audits are available at two (2) levels, firstly within Interbase 6.5, full events logs are available, at the client level we have developed audit mechanisms to track changes to data tables and also events over the weighbridge, expansion of any of the current client auditing is available on request. Replication is implemented in Interbase 6.5 source and destination concepts, similar to traditional publisher and subscriber modes. Replication can take place 1-way, 2-way and N-way between central database server and the site server/s. Security for Interbase relies on a central security database for each server host. This database, ise4.gdb, contains a record for each legitimate user who has permission to connect to databases and Interbase services on that host. Each record includes the user login name and the associated encrypted password. The entries in the security database apply to all databases on that server host. Operation Permission can be role based or user base permission. At client level AWS (Aussie Weighbridge Systems) Pty Ltd have developed the program with user name and password login procedure. Each user is created within the client and the administrator assigns access of certain function and privileges to each user.

In Interbase 6.5 the transaction context can span to multiple databases. Transactions are implemented by using Interbase 6.5 transaction management, all operations to the underlying table/s are within the transaction context, and if there is a data cliché all operations are rolled back automatically.

Interbase server runs on a variety of platforms, including Microsoft Windows NT, Windows 2000, and Windows 98/ME, Linux, and Unix operating systems.

The Interbase server software makes efficient use of system resources on the server node. The server process uses little more than 1.9 MB of memory. Typically, each client connection to the server adds approximately 115KB of memory. This varies based on the nature of the client applications and the database design, so the figure is only a baseline for comparison.