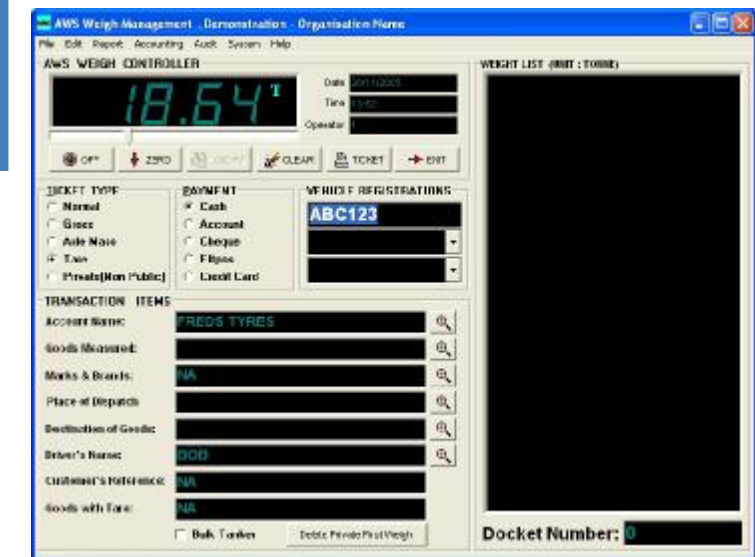


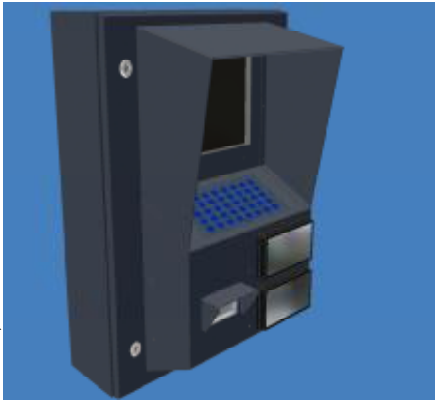
AWS WEIGHBRIDGE MANAGEMENT

REGISTERED PUBLIC WEIGHBRIDGE MANAGEMENT
SOLUTION FOR INDUSTRY



SCALEABLE INSTALLATION OPTIONS:

The many options and inclusive AWS Public Weighbridge Client Programs that come standard with our quality products makes it possible to setup staff with different management and procedural tasks with a Windows environment to contribute to the management of the public weighbridge business and collection and processing of data.



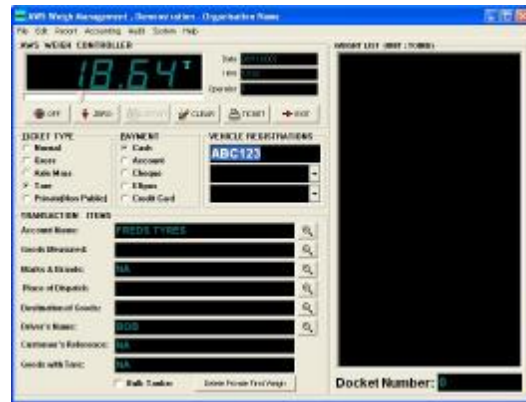
AWS ESCALE Unmanned Windows Terminal



Windows Unmanned Screen - User Friendly

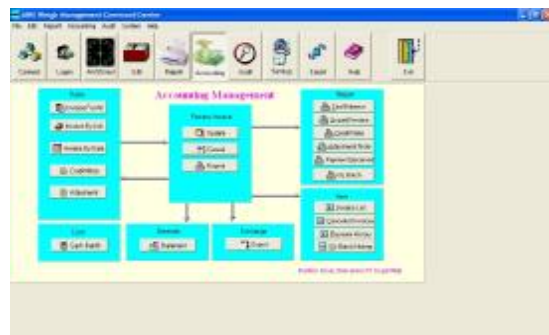


Manned Weighbridge Client PC



Standard Windows Networking on WAN & LANs

Simultaneously, hundreds of users can be interacting with the AWS Server database, updating tables, doing accounting running or exporting data & reports, entering transactions manually OR unattended by the vehicle driver.



Systems Features

Aussie Weighbridge Systems Weighbridge Management is a Windows PC based weighing and information management software system package. It incorporates a multi-window environment, with pull-down and pop-up menus, and data entry fields for database manipulation. The client programs and server database are designed to cater for **Registered Public Weighbridges**.

The software architecture is a two (2)-tier client and server environment. The server environment provides a powerful relational database, which is interacted through user-friendly weighbridge management client programs. The client programs can be configured through middleware and may reside on the same computer as the server database, or may reside on other computers on a LAN or WAN. The weighbridge and unmanned weighbridge client may be directly connected to the weighbridge/s digital indicator and other controlled peripheral devices. Version 3.6 onwards can be configured through the setup.ini file to change the Client environment from the standard manned weighbridge client environment, unmanned automatic weighing terminal client and also to the Back Office Administration Environment, and as per recent development the Unmanned Driver Control Station Terminal Client. This new feature allows more options for the software owner to better utilize the licensing purchased with the system. It also means that all environments reside in the same program group and file structure to allow ease of backup.

It is possible to connect many simultaneous users to the server database without loss of program speed and functionality. Enquire with your AWS Sales Representative to the scaleable client and server options and the many peripheral hardware options available.

The following are amongst a list of standard features:

1. The Administrator can allocate Operator Permissions and individual logons.
 2. At Logon, Cash Reconciliation option to balance cash floats.
 3. Debtors accounting with invoices, statements, credits and adjustments.
 4. The ability to reconcile debtor's payments.
 5. Cash & Account GL Batches can be generated and transferred to third party General Ledger programs.
 6. Invoices can be raised from job numbers created on the system.
 7. Accounting table records can be exported to file locations in three-supported common file formats.
 8. Separate debtors accounting reports, trial balance, unpaid invoices etc.
 9. In process credit control **ALERTS**, customer account warnings.
 10. Account status warning messaging may be printed to transaction dockets if allowed to continue.
 11. Personalised debtors accounting stationary by importing company logos, changing stationary footer messaging, user entered messaging automatically printed on ageing customer accounts.
 12. The system provides accounting and transaction stationary. Also allows Microsoft WORD templates to be created and recalled.
 13. CBA Com2000 Eftpos terminal Interface and control from the client programs manned and unmanned automatic operation.
 14. The ability to reprint a weighbridge dockets.
 15. Email reports and exports directly from the client programs.
 16. Configuration module to set and change connected peripheral devices from the client program interface.
 17. Export Wizard, select fields and export your transactions information in dbase and text file formats to the file location of choice. The ability to save the fields structure use for regular exports.
 18. Tables are provided to store information on Products both weighed and counted if necessary, Customers, Suppliers, Destinations, Source, and Vehicle Types for unweighed Standard Loads, Company Fleet Trucks, Customer Trucks, Suppliers / Contractors Trucks, Trailers, Drivers, Job Numbers.
 19. Full scaleable pricing table and ability to fix weighing charges against the customer record.
 20. Schedule price increases either globally or by product to activate on a certain date.
 21. The ability to edit a previously created transaction to adjust mistakes, changes logged in **AUDIT** tables.
 22. The ability to create **Manual Transactions** if necessary. Manual transactions may be entered from other locations with site-specific docket numbers entered by the user.
 23. The reporting in the system is very powerful and will allow the operator to filter as little or as much data from the report as required.
 24. There are also GST reports and all necessary reporting to prepare returns.
 25. Reports can be exported from the report generation window as PDF's and emailed off your desktop.
 26. If you have more than one site there is also a very useful Configuration Module, which allows each site to set-up the software to work with the logistics of the site and style of reporting, and weighbridge docket data required.
 27. The software will interface with and support a cash draw.
 28. Interfaces to electronic ID systems like proximity cards, Dallas ID Buttons and other identification systems supported.
 29. Transaction data can be transmitted to video systems for storage with video images, this makes site auditing very fast and accurate.
 30. Traffic Lights & Boom Gates can be interfaced and controlled by both manned and unmanned client programs.
 31. Barcode Reader options available to automate some transaction procedures.
1. Record offending and prohibited vehicles, the programs monitor for prohibited vehicles and prevent transactions on barred vehicles.
 2. Control deletion of transaction dockets, actions written to audit table, including operator ID, time, date.
 3. Audit tables for most editor functions on the database. Restricted access to these tables can be available by logon. The program also monitors for weighbridge weight increases that do not result in a transaction. This setting can be adjusted to suit the requirements of a site, and makes it difficult for weighbridge staff to give away business should this be a concern.
 4. Trucks may have stored tares, and validity can be set on the tare value to allow random retare requirements. The software automatically provides this procedure.
 5. Duty of Care requirements are considered with vehicle's gross vehicle mass recorded in truck tables to monitor overloaded vehicles leaving the site.
 6. RTA Rego Weigh Tickets can be processed in one pass over the weighbridge; charge table for these transactions can be set-up.

Some of the more notable newer features in Ver3.7B:

1. Replication Schema Interfaces to allow automatic replication of site data direct to Central Database Office Suite. Excellent solution for Multi-Site or Multi-Task site with separate stand alone databases. This solution consolidates all data seamlessly.
2. Job Number / Contract Number Table Expansion to include, more price & cartage price options.
3. Expansion of Suppliers Accounting features & reports, the program is a step closer to providing double entry accounting.
4. Improvements & expansion of the **Manual Point of Sale Docketing Module** for sites that may not have a weighbridge as yet? Supports barcode functions just like going to the supermarket or hardware store.
5. Development of full **USER** configurable I/O control with interface card to support more external devices and inputs from field transducers etc.
6. ESCALE unmanned client has increasingly more function, this system stands alone and can adequately process traffic without any human input, Fast, reliable, stable!
7. Option of adding full reverses cycle air conditioning to ESCALE Terminal enclosures to deal with the hot / cool environments.

New functions are being added to this quality program all the time as we react to our customer's feedback for even better, smarter, time saving systems. The features listed on this page are the more notable and sort after features, your standard AWS program comes with a lot more innovation than you may expect!!

AWS Customer Testimonials

"We find Aussie Weighbridge Systems software simple to use. New staff pick it up in a very short time. Features are easy to use and the reporting system couldn't be easier. The staff at AWS will bend over backwards to help customers in the unlikely event of a problem and are constantly doing R&D to upgrade the system. We would recommend the system to other Councils & Private businesses looking for this sort of product."

**Steve Gribbin Technical Officer Waste Services,
Tamworth Regional Council**

"We have the AWS system installed at three sand quarry sites operating as an unattended docketing system linked to our existing sales system. The software is proving reliable and easy to use and the after sales support has been excellent."

Greg Howell Rocla Quarry Products Perth

"We have been running AWS software for several years now and have found it to be extremely reliable and easy to use. The service and support provided by the AWS team has been fantastic and it has been a pleasure to deal with them!"

Katherine Frost, Griffith City Council.

"AWS after sales support is outstanding. Staff very polite and helpful and will be with you till your problem is solved".

**Vincent Namekit Technical Manager
Hargy Oil Palms Ltd West New Britain Province Papua New Guinea**

"PGH installed 5 AWS ESCALE Weighbridge Terminals, running AWS Weighbridge Management Database and Client Software within our NSW Brick & Paver division. We are and have been more than happy with the products, service shown to us, both during and after installation".

**Sam Tarabori NSW Raw Materials Manager
CSR PGH Brick & Paver Division**

"The AWS system fulfills a number of functions required by different aspects of the business and accommodates a large number of users."

**Terry Hogan Grains Manager
Uncle Tobys / Goodman Fielder WAHGUNYAH VIC**

"We found AWS helpful and professional at all stages of installing our new weighbridge, as well as providing good support over the past 12 months."

Vanessa Toparis, Goulburn City Council

The included list of standard features, are requirements of a quality weighbridge transaction and reporting systems. There are more standard functions and with the ease of use for operators and truck drivers alike makes the product a leader in the weighing industry. Our in-house development team work with new and existing customers to make the product suit many industries and changes to cater for industry needs. As a licensed weighing company AWS also works closely National Standards Commission and The Department of Fair Trading publications and codes of practice to insure the system comply with government requirements and acts of parliament. Our sales team will also advise and provide pricing for correct weighbridge signage, peripheral displays and weighbridge infrastructure to insure you get the optimum results and throughput for your site.

Desktop Computer Requirements for AWS Weighbridge Management Software System/s

Computer Hardware Standard:

- Minimum Pentium 4 PC.
- Minimum 256 Megabytes RAM.
- Requires approximately 500 Meg of Hard Disk space for prolonged use, recommend 40Ghd.
- R/W CD drive.
- 17" VGA Monitor.
- Two (2) Spare RS232 Serial Communications Ports. (Weighbridge Indicator & Docket Printer).
- Standard Parallel Port for standard reports type printer.
- Server Database Cross Platform, Window or Unix.

Supported Operating Systems are: Windows 95, 98, 2000, XP. Windows NT 4.0.

Optional Computer Hardware Requirements:

The following extra add on cards and requirements maybe required if you system has interfaces to other devices like Traffic Lights and Boom Gates, External Weighbridge Docket Printer/s, Automatic Identification Readers and connections to Video Recording Systems. Most computers have added on PCI slots to allow the expansion cards.

Serially Connected Options:

- Extra Weighbridge Docket Printer requires a standard RS232 COM port.
- Traffic Control Interface requires a standard parallel port.
- Chubb Video Security System interface requires standard RS232 COM port.
- Dallas Identification Reader requires standard RS232 COM port.

Please contact your AWS Support Team should you have any queries regarding the interfaces necessary for your quality AWS Software System sales@awsscales.com.au